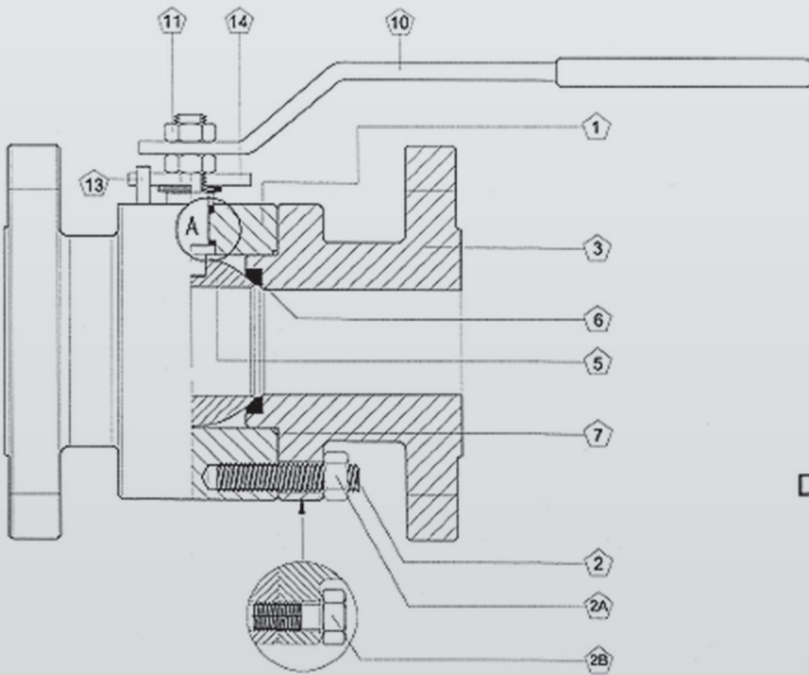


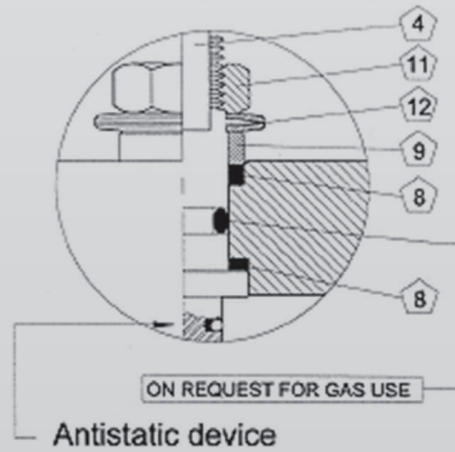
AI-60 SB PN16-40

VALVOLA A SFERA SPLIT BODY PN16 PASS. TOTALE
SPLIT BODY BALL VALVE PN 16 FULL BORE

AI-60 SB PN16-40



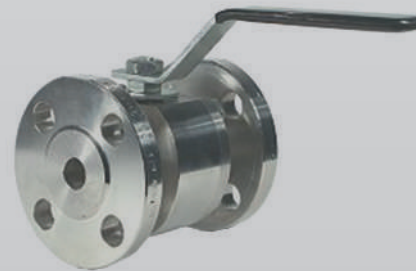
DETAIL - DETTAGLIO A



BASIC DESIGN STANDARDS

1 Body	ASTM A 105 SS. F 316
2 Bolt	Zinc Plated CS *
2A Bolt	Zinc Plated CS *
2B Bolt	Zinc Plated CS *
3 Lateral	ASTM A 105 SS. F 316
4 Stem	SS. F 316 SS. F 316
5 Ball	SS. F 304/316 SS. F 316
6 Seat	PTFE / RPTFE PTFE / RPTFE
7 Body Seal	RPTFE RPTFE
8 Stem Seals	RPTFE RPTFE
9 Gland	Inox
10 Lever	Zinc Plated CS
11 Lever Nut	Zinc Plated CS
12 Socket Spring	Zinc Plated CS
13 Stop Pin	Zinc Plated CS
14 Stop Plate	Zinc Plated CS

* A richiesta: B7, B7M, 2H, B8, B8M



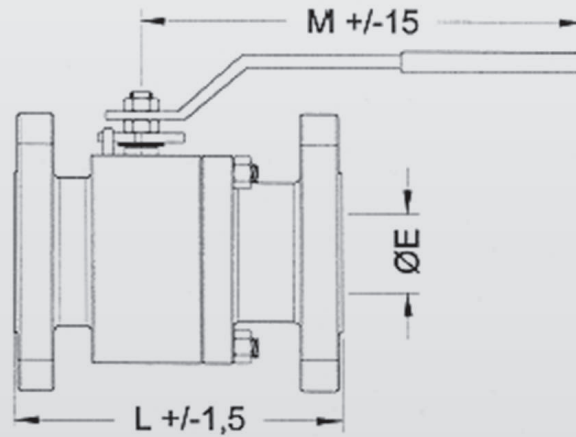
STANDARD DESCRIPTION

- Split body imbullonata flangiata UNI PN16 - PN40
- Scartamenti UNI; DIN 3202 F4 - F5 (su richiesta scartamenti F1 e speciali)
- Passaggio Ridotto da DN 1"1/2 e Superiori

AUDCO ITALIANA
Your Valve Specialist

AUDCO ITALIANA srl
Headquarter and plant
Via Carlo Dell'Acqua, 1 | 20027 Rescaldina (MI) - Italy
Tel. +39.0331.1561323 | Fax +39.0331.1561327
info@audco.it | www.audco.it

AI-60 SB PN16-40



FULL BORE											
DN	15	20	25	32	40	50	65	80	100	125*	150*
NPS	1/2"	3/4"	1"	1" 1/4	1" 1/2	2"	2" 1/2	3"	4"	5"	6"
Ø E	14	19	25	32	38	48	65	76	95	119	145
L	115	120	125	130	140	150	170	180	190	325	350
M	150	185	185	280	280	280	380	380	480	480	480
Kg	2,7	4	6	7	12	14	21	22	36	60	70

3 PIECES CONSTRUCTION

- On request face to face ANSI B16.10 long pattern
- FIRE SAFE execution API 607
- ANTISTATIC design
- TA-LUFT execution / VDI 2440
- Execution for GAS Service
- Degrassing for OXYGEN service
- Lever Extension for valve insulation
- Locking Device
- Ends RTJ/FF/LG
- Execution on Customer request

MADE IN ITALY



AUDCO ITALIANA
Your Valve Specialist

AUDCO ITALIANA srl
Headquarter and plant
Via Carlo Dell'Acqua, 1 | 20027 Rescaldina (MI) - Italy
Tel. +39.0331.1561323 | Fax +39.0331.1561327
info@audco.it | www.audco.it